

Chain according to ISO 1275		Pitch		Inner width	Inner link width	Outer plate width	Roller Ø	Pin Ø	Plate height	Projection over connecting link	Width over pin	Bearing area	Breaking load	Weight
⚙️		p		b ₁ min.	b ₂ max.	b ₃ min.	d ₁ max.	d ₂ max.	g max.	k max.	l ₁ max.	f	F _B min.	q ≈
No.	Ind.	mm	inch	mm	mm	mm	mm	mm	mm	mm	mm	cm ²	kN	kg/m
208 B MA		25,40	1	7,75	11,30	11,43	8,51	4,45	11,8	3,9	17,0	0,50	18,0	0,48
210 B MA		31,75	1 ¼	9,65	13,28	13,41	10,16	5,08	14,7	4,1	19,6	0,67	22,4	0,55
212 B MA		38,10	1 ½	11,68	15,62	15,75	12,07	5,72	16,1	4,6	22,7	0,89	29,0	0,80
216 B MA		50,80	2	17,02	25,45	25,58	15,88	8,28	21,0	5,4	36,1	2,10	60,0	1,74
220 B MA		63,50	2 ½	19,56	29,01	29,14	19,05	10,19	28,0	6,1	43,2	2,96	95,0	2,55

* g-measurement not according to standard

Sprockets for double pitch roller chains can be used for these chains.

Connecting links: According to ISO (...)



No. 4 (B)
Inner link



No. 7 (A)
Outer link
(to be riveted)



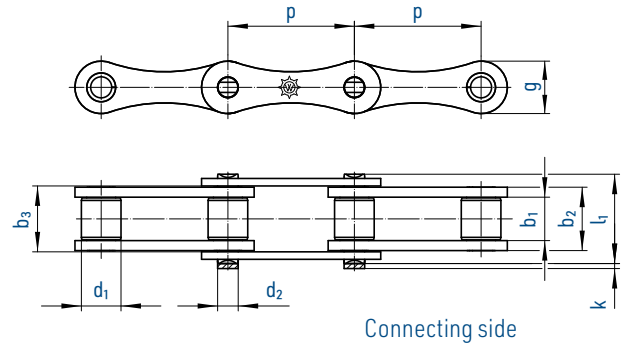
No. 111 (S)
Connecting link
with cottered pin



No. 11 (E)
for chain No. 713
with spring clip (E)



No. 12 (L)
Single
cranked link



Chain			Pitch		Inner width	Inner link width		Outer plate width	Roller Ø	Pin Ø	Plate height	Projection over connecting link	Width over pin	Bearing area	Breaking load ISO	Weight
No.	Ind.	ISO Nr.	mm	inch	b ₁ min.	b ₂ max.	b ₃ min.	d ₁ max.	d ₂ max.	g max.	k max.	l ₁ max.	f	F _B min.	q ≈	
713		208 B	25,40	1	7,75	11,30	11,43	8,51	4,45	11,8	3,9	17,0	0,50	18,0	0,46	
717		210 B	31,75	1 ¼	9,65	13,28	13,41	10,16	5,08	14,7	4,1	19,6	0,67	22,4	0,57	
722		212 B	38,10	1 ½	11,68	15,62	15,75	12,07	5,72	16,1	4,6	22,7	0,89	29,0	0,75	
728		216 B	50,80	2	17,02	25,40	25,60	15,88	8,28	21,0	5,4	36,1	2,10	60,0	1,74	
734	*	220 B	63,50	2 ½	19,56	29,00	29,20	19,05	10,19	28,5	6,1	43,2	2,96	95,0	2,55	

Electrogalvanised or nickel-plated chains on request. In this case chains may only have 80 % of the tensile strength.

* g-measurement not according to standard

Double pitch roller chains (stainless steel)

713 RF		208 B	25,40	1	7,75	11,30	11,43	8,51	4,45	11,8	3,9	17,0	0,50	12,0	0,48
717 RF		210 B	31,75	1 ¼	9,65	13,28	13,41	10,16	5,08	14,7	4,1	19,6	0,67	14,5	0,55
722 RF		212 B	38,10	1 ½	11,68	15,62	15,75	12,07	5,72	16,1	4,6	22,7	0,89	18,5	0,80
728 RF		216 B	50,80	2	17,02	25,40	25,60	15,88	8,28	21,0	5,4	36,1	2,10	40,0	1,74

For details on orders and enquiries see page 148. Sprockets on request.
Information on the selection of chain sizes and drives as of page 136.

Connecting links: According to ISO (...)



No. 4 (B)
Inner link

No. 7 (A)
Outer link
(to be riveted)

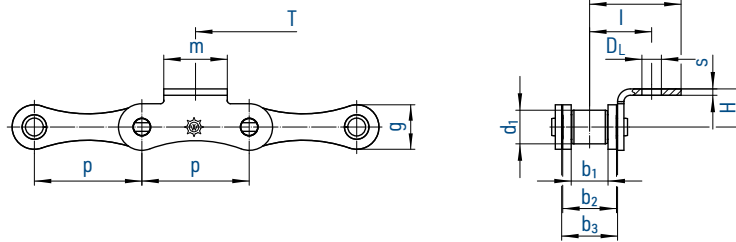
No. 111 (S)
Connecting link
with cottered pin

No. 11 (E)
for chain No.
713 with spring
clip (E)

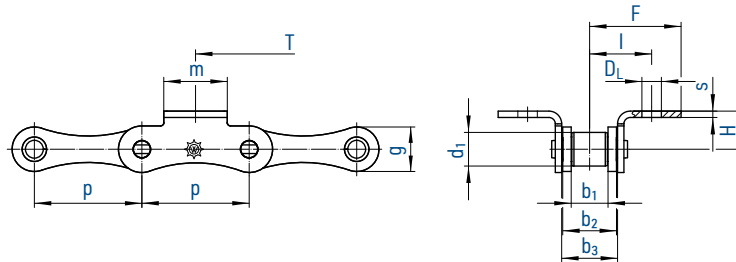
No. 12 (L)
Single
cranked link



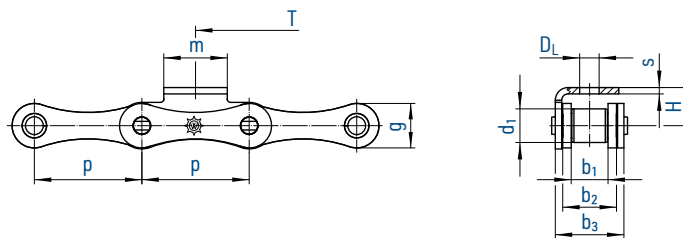
Type A
bent attachments, one side



Type B
bent attachments, both sides



Type C
bent over chain attachments, one side



Basic chain		Pitch		Inner width	Inner link width	Outer plate width	Roller Ø	Plate height	Attachment dimensions					
⚙️		p		b ₁ min.	b ₂ max.	b ₃ min.	d ₁ max.	g max.	m	D _L	l	F	H	s
No.	Ind.	mm	inch	mm	mm	mm	mm	mm	mm	mm	mm	mm	mm	mm
713		25,40	1	7,75	11,30	11,43	8,51	11,8	13,0	4,5	13,1	19,3	10,0	1,60
717		31,75	1 ¼	9,65	13,28	13,41	10,16	14,7	15,0	5,5	16,7	26,7	10,0	1,70
722		38,10	1 ½	11,68	15,62	15,75	12,07	16,1	19,0	6,6	18,5	26,0	11,0	1,80
728		50,80	2	17,02	25,45	25,58	15,88	21,0	30,0	9,0	28,9	43,0	18,0	3,00
734	*	63,50	2 ½	19,56	29,01	29,14	19,05	28,5	35,0	9,0	33,1	49,6	18,0	3,75

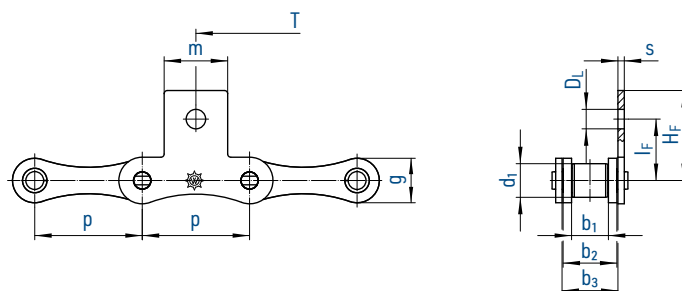
* g-measurement not according to standard

Double pitch stainless steel roller chains with single hole bent attachments

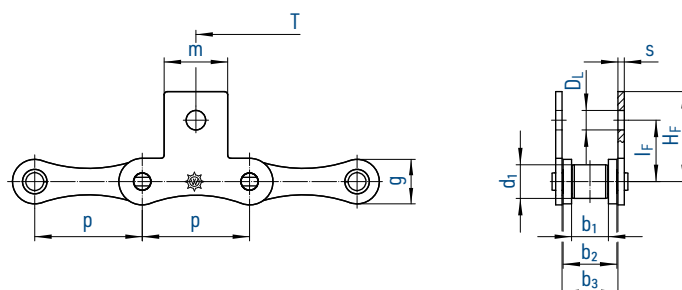
713 RF		25,40	1	7,75	11,30	11,43	8,51	11,8	13,0	4,5	13,1	19,5	10,0	1,60
717 RF		31,75	1 ¼	9,65	13,28	13,41	10,16	14,7	15,0	5,5	16,7	26,7	10,0	1,70
722 RF		38,10	1 ½	11,68	15,62	15,75	12,07	16,1	19,0	6,6	18,5	26,0	11,0	1,80
728 RF		50,80	2	17,02	25,45	25,58	15,88	21,0	30,0	9,0	28,9	43,0	18,0	3,00

All designs can also be supplied as MARATHON roller chains (maintenance-free)!
For details on orders and enquiries see page 149. For untoleranced dimensions DIN ISO 2768 c applies.

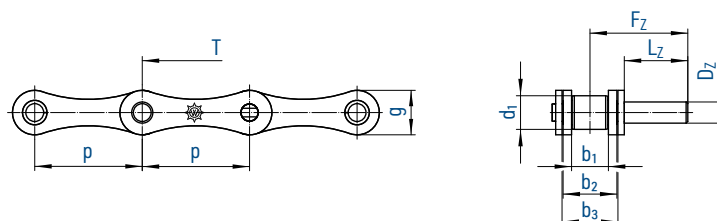
Type D
straight attachments, one side



Type E
straight attachments, both sides



Type F
extended pin
(available on alternate sides)



Basic chain		Pitch		Inner width	Inner link width	Outer plate width	Roller Ø	Plate height	Attachment dimensions							
									p	b_1 min.	b_2 max.	b_3 min.	d_1 max.	g max.	m	D_L
No.	Ind.	mm	inch	mm	mm	mm	mm	mm	mm	mm	mm	mm	mm	mm	mm	mm
713		25,40	1	7,75	11,30	11,43	8,51	11,8	13,0	4,5	14,7	20,3	1,60	6,0	15,0	22,4
717		31,75	1 ¼	9,65	13,28	13,41	10,16	14,7	15,0	5,5	17,0	26,7	1,70	6,5	20,0	28,5
722		38,10	1 ½	11,68	15,62	15,75	12,07	16,1	19,0	6,6	17,6	26,0	1,80	7,0	20,0	29,8
728		50,80	2	17,02	25,45	25,58	15,88	21,0	30,0	9,0	29,0	42,5	3,00	10,0	30,0	45,9
734	*	63,50	2 ½	19,56	29,01	29,14	19,05	28,5	35,0	9,0	30,5	45,7	3,75	12,0	30,0	48,4

* g-measurement not according to standard

Double pitch roller chains (stainless steel) with single hole straight attachments and extended pins

713 RF		25,40	1	7,75	11,30	11,43	8,51	11,8	13,0	4,5	14,7	20,3	1,60	6,0	15,0	22,4
717 RF		31,75	1 ¼	9,65	13,28	13,41	10,16	14,7	15,0	5,5	17,0	26,7	1,70	6,5	20,0	28,5
722 RF		38,10	1 ½	11,68	15,62	15,75	12,07	16,1	19,0	6,6	17,6	26,0	1,80	7,0	20,0	29,8
728 RF		50,80	2	17,02	25,45	25,58	15,88	21,0	30,0	9,0	29,0	42,5	3,00	10,0	30,0	45,9

¹⁹ can also be supplied in stainless steel

Can also be supplied as MARATHON roller chain (maintenance-free)!

For details on orders and enquiries see page 149. For untoleranced dimensions DIN ISO 2768 c applies.