

Outer guide system

Chain		Pitch	Lacing	Working width	Overall width	Pin Ø	Projection over connecting link	Bearing area	Breaking load	Weight
		p		b min.	l ₁ max.	d ₂ max.	k	f	FB min.	q ≈
No.	Ind.	mm		mm	mm	mm	mm		kN	kg/m
1110		10,0	1 x 2	9,6	17,6	3,15	1,6	0,20	11,0	0,64
1112		10,0	2 x 3	16,0	24,1	3,15	1,6	0,29	17,0	0,93
1114		10,0	4 x 5	28,9	37,1	3,15	1,6	0,49	28,0	1,56
1115		10,0	5 x 6	35,2	43,4	3,15	1,6	0,59	34,0	1,88

Inverted tooth chain sprockets on request.

When ordered by length in metres, the chain will contain the next higher even number of links with a connecting pin. When ordered by number of links, the chain will be supplied with an uneven number of links and include a single cranked link riveted into the chain as well as a connecting pin.

Connecting links: According to ISO (...)



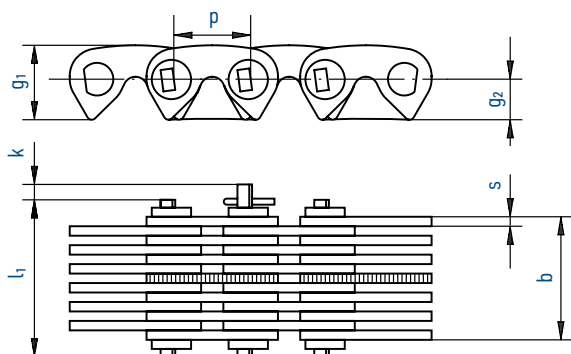
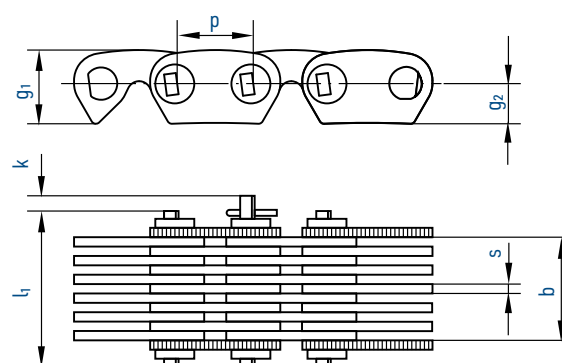
No. 10
Connecting pin



No. 52
Cranked three-joint connecting link



No. 53
Straight two-joint connecting link

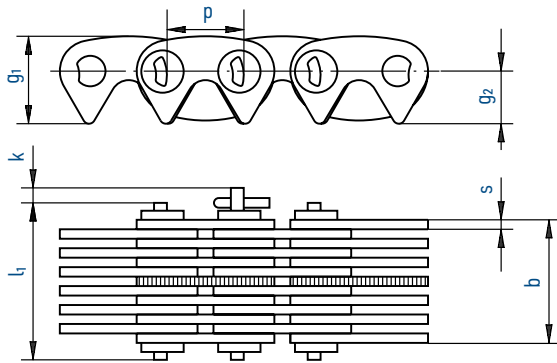

Inner guide system (J)

Outer guide system (A)

Chain		Pitch	Working width	Overall width	Plate height		Plate thickness	Projection over connecting link	Number of rows*	Breaking load	Tooth width	Weight
⚙️		p	b min.	l ₁ max.	g ₁ max.	g ₂	s	k	RZ	F _B min.		q ≈
No.	Ind.	mm	mm	mm	mm	mm	mm	mm		kN	mm	kg/m
06-015A		9,525	12,5	20,0	9,2	5,2	1,50	2,0	10	12,1	11,5	0,80
06-020A		9,525	17,2	24,5	9,2	5,2	1,50	2,0	13	14,8	16,0	1,00
06-025J		9,525	26,6	31,0	9,2	5,2	1,50	2,0	17	22,9	30,0	1,10
06-030J		9,525	33,0	37,1	9,2	5,2	1,50	2,0	21	28,3	35,0	1,40
06-035J		9,525	39,1	43,5	9,2	5,2	1,50	2,0	25	33,7	40,0	1,70
08-015A		12,700	12,5	21,5	12,3	6,7	1,50	2,5	10	16,0	11,5	1,00
08-020A		12,700	17,2	26,0	12,3	6,7	1,50	2,5	13	19,6	16,0	1,20
08-025J		12,700	26,6	32,5	12,3	6,7	1,50	2,5	17	30,3	30,0	1,40
08-030J		12,700	33,0	39,0	12,3	6,7	1,50	2,5	21	37,4	35,0	1,80
08-035J		12,700	39,1	45,0	12,3	6,7	1,50	2,5	25	44,6	40,0	2,10
08-050J		12,700	51,6	58,0	12,3	6,7	1,50	2,5	33	58,9	55,0	2,80
08-065J		12,700	64,2	69,8	12,3	6,7	1,50	2,5	41	73,1	70,0	3,50
10-025J		15,875	27,0	33,0	15,4	8,4	2,00	3,0	13	39,7	30,0	1,90
10-035J		15,875	35,5	41,5	15,4	8,4	2,00	3,0	17	52,0	40,0	2,50
10-040J		15,875	43,7	49,5	15,4	8,4	2,00	3,0	21	64,2	45,0	3,00
10-050J		15,875	52,0	58,0	15,4	8,4	2,00	3,0	25	76,5	55,0	3,60
10-065J		15,875	69,0	75,4	15,4	8,4	2,00	3,0	33	100,9	70,0	4,80
12-035J		19,050	35,5	43,0	18,5	10,1	2,00	3,5	17	65,0	40,0	2,90
12-040J		19,050	44,0	51,0	18,5	10,1	2,00	3,5	21	80,3	45,0	3,60
12-050J		19,050	52,0	59,0	18,5	10,1	2,00	3,5	25	95,6	55,0	4,30
12-065J		19,050	68,6	76,0	18,5	10,1	2,00	3,5	33	126,2	70,0	5,70
12-075J		19,050	77,0	84,0	18,5	10,1	2,00	3,5	37	141,5	80,0	6,40
16-050J		25,400	53,0	61,0	25,0	13,1	3,00	4,0	17	126,4	55,0	5,90
16-065J		25,400	65,0	73,0	25,0	13,1	3,00	4,0	21	156,1	70,0	7,30
16-075J		25,400	77,5	85,5	25,0	13,1	3,00	4,0	25	185,9	80,0	8,70
16-100J		25,400	103,0	111,0	25,0	13,1	3,00	4,0	33	245,4	105,0	11,40
16-125J		25,400	127,0	135,0	25,0	13,1	3,00	4,0	41	304,9	130,0	14,20
24-065J		38,100	65,5	77,5	37,0	20,1	3,00	6,0	21	232,0	75,0	10,80
24-075J		38,100	78,0	90,0	37,0	20,1	3,00	6,0	25	276,2	85,0	12,90
24-100J		38,100	103,0	115,0	37,0	20,1	3,00	6,0	33	364,6	110,0	17,00
24-125J		38,100	127,5	139,5	37,0	20,1	3,00	6,0	41	453,0	135,0	21,10
24-150J		38,100	153,0	165,0	37,0	20,1	3,00	6,0	49	541,4	160,0	25,20
32-100J		50,800	104,5	117,5	49,2	26,8	4,00	7,0	25	478,1	110,0	22,60
32-115J		50,800	121,2	135,0	49,2	26,8	4,00	7,0	29	554,8	125,0	26,20
32-135J		50,800	138,0	151,0	49,2	26,8	4,00	7,0	33	631,1	145,0	29,80
32-150J		50,800	154,7	167,7	49,2	26,8	4,00	7,0	37	707,6	160,0	33,50
32-180J		50,800	188,1	201,1	49,2	26,8	4,00	7,0	45	860,6	190,0	40,70

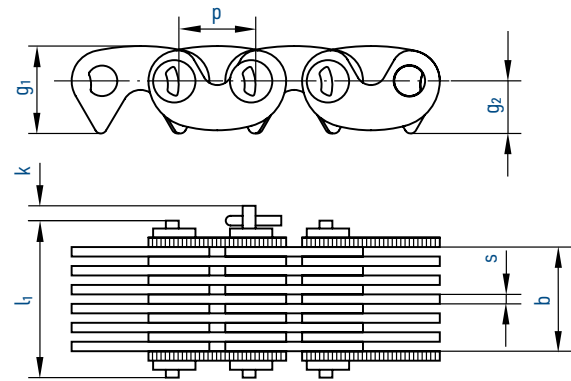
* Plates on one pivot pin

Inverted tooth chain sprockets on request.

When ordered by length in metres, the chain will contain the next higher even number of links with a connecting pin. For this type of inverted tooth chain no cranked links are available.



Inner guide system (J)



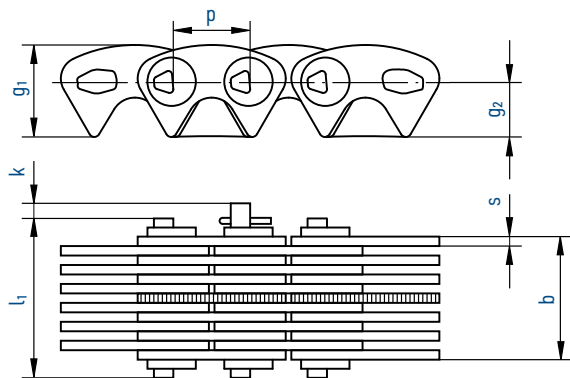
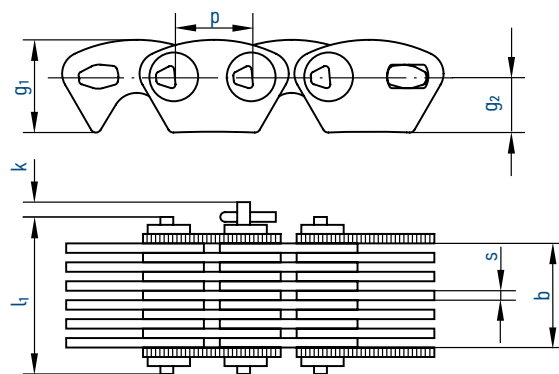
Outer guide system (A)

Chain		Pitch	Working width	Overall width	Plate height		Plate thickness	Projection over connecting link	Number of rows*	Breaking load	Tooth width	Weight
⚙		p	b min.	l ₁ max.	g ₁ max.	g ₂	s	k	RZ	FB min.		q ≈
No.	Ind.	mm	mm	mm	mm	mm	mm	mm		kN	mm	kg/m
HD 06-015A		9,525	12,5	19,9	10,9	6,7	1,50	2,0	10,0	14,5	11,5	0,90
HD 06-020A		9,525	17,2	24,5	10,9	6,7	1,50	2,0	13,0	17,7	16,0	1,10
HD 06-025J		9,525	26,6	30,8	10,9	6,7	1,50	2,0	17,0	27,4	30,0	1,40
HD 06-030J		9,525	32,9	37,1	10,9	6,7	1,50	2,0	21,0	33,9	35,0	1,70
HD 06-040J		9,525	39,1	43,3	10,9	6,7	1,50	2,0	25,0	40,3	45,0	2,00
HD 06-050J		9,525	51,6	55,8	10,9	6,7	1,50	2,0	33,0	53,2	55,0	2,60
HD 06-065J		9,525	64,2	68,4	10,9	6,7	1,50	2,0	41,0	66,2	70,0	3,30
HD 08-015A		12,700	12,5	21,3	14,5	8,7	1,50	2,5	10,0	20,2	11,5	1,10
HD 08-020A		12,700	17,2	25,9	14,5	8,7	1,50	2,5	13,0	24,7	16,0	1,40
HD 08-025J		12,700	26,6	32,2	14,5	8,7	1,50	2,5	17,0	38,2	30,0	1,80
HD 08-030J		12,700	32,9	38,5	14,5	8,7	1,50	2,5	21,0	47,3	35,0	2,20
HD 08-040J		12,700	39,1	44,7	14,5	8,7	1,50	2,5	25,0	56,3	45,0	2,60
HD 08-050J		12,700	51,6	57,2	14,5	8,7	1,50	2,5	33,0	74,3	55,0	3,40
HD 08-065J		12,700	64,2	69,8	14,5	8,7	1,50	2,5	41,0	92,3	70,0	4,30
HD 08-075J		12,700	76,7	82,3	14,5	8,7	1,50	2,5	49,0	110,3	80,0	5,10
HD 08-100J		12,700	101,7	107,3	14,5	8,7	1,50	2,5	65,0	146,4	105,0	6,70
HD 12-030A		19,050	27,0	38,2	21,0	10,7	2,00	3,5	15,0	59,6	25,0	3,30
HD 12-035J		19,050	35,4	42,4	21,0	10,7	2,00	3,5	17,0	78,0	40,0	3,70
HD 12-040J		19,050	43,7	50,7	21,0	10,7	2,00	3,5	21,0	96,3	50,0	4,50
HD 12-050J		19,050	52,0	59,0	21,0	10,7	2,00	3,5	25,0	114,7	55,0	5,40
HD 12-065J		19,050	68,6	75,6	21,0	10,7	2,00	3,5	33,0	151,4	70,0	7,10
HD 12-085J		19,050	85,3	92,3	21,0	10,7	2,00	3,5	41,0	188,1	90,0	8,90
HD 12-100J		19,050	101,9	108,9	21,0	10,7	2,00	3,5	49,0	224,9	105,0	10,60
HD 12-125J		19,050	126,9	133,9	21,0	10,7	2,00	3,5	61,0	279,9	130,0	13,20
HD 12-150J		19,050	151,8	158,8	21,0	10,7	2,00	3,5	73,0	335,0	155,0	15,80
HD 12-200J		19,050	201,8	208,8	21,0	10,7	2,00	3,5	97,0	445,2	205,0	20,90
HD 16-040J		25,400	40,2	48,2	27,7	14,0	3,00	6,0	13,0	112,1	45,0	5,60
HD 16-050J		25,400	52,6	60,6	27,7	14,0	3,00	6,0	17,0	146,6	55,0	7,30
HD 16-065J		25,400	65,0	73,0	27,7	14,0	3,00	6,0	21,0	181,1	70,0	9,00
HD 16-075J		25,400	77,4	85,4	27,7	14,0	3,00	6,0	25,0	215,6	80,0	10,70
HD 16-100J		25,400	102,1	110,1	27,7	14,0	3,00	6,0	33,0	284,7	105,0	14,10
HD 16-125J		25,400	126,9	134,9	27,7	14,0	3,00	6,0	41,0	353,7	130,0	17,50
HD 16-150J		25,400	151,7	159,7	27,7	14,0	3,00	6,0	49,0	422,7	155,0	21,00
HD 16-200J		25,400	201,2	209,2	27,7	14,0	3,00	6,0	65,0	560,7	205,0	27,80

* Plates on one pivot pin

Inverted tooth chain sprockets on request.

When ordered by length in metres, the chain will contain the next higher even number of links with a connecting pin. For this type of inverted tooth chain no cranked links are available.


Inner guide system (J)

Outer guide system (A)

Chain		Pitch	Working width	Overall width	Plate height		Plate thickness	Projection over connecting link	Number of rows*	Breaking load	Tooth width	Weight
		p	b min.	l_1 max.	g_1 max.	g_2	s	k	RZ	FB min.		q ≈
No.	Ind.	mm	mm	mm	mm	mm	mm	mm		kN	mm	kg/m
HP 06-015A		9,525	12,5	19,9	11,3	6,8	1,50	2,0	10,0	25,4	11,5	1,00
HP 06-020A		9,525	17,2	24,5	11,3	6,8	1,50	2,0	13,0	30,1	16,0	1,20
HP 06-025J		9,525	26,6	30,8	11,3	6,8	1,50	2,0	17,0	39,3	30,0	1,50
HP 06-030J		9,525	32,9	37,1	11,3	6,8	1,50	2,0	21,0	48,6	35,0	1,80
HP 06-040J		9,525	39,1	43,3	11,3	6,8	1,50	2,0	25,0	57,9	45,0	2,20
HP 06-050J		9,525	51,6	55,8	11,3	6,8	1,50	2,0	33,0	76,4	55,0	2,90
HP 06-065J		9,525	64,2	68,4	11,3	6,8	1,50	2,0	41,0	94,9	70,0	3,60
HP 08-015A		12,700	12,5	21,7	15,2	9,0	1,50	2,5	10,0	27,9	11,5	1,20
HP 08-020A		12,700	17,2	26,3	15,2	9,0	1,50	2,5	13,0	34,1	16,0	1,60
HP 08-025J		12,700	26,6	32,6	15,2	9,0	1,50	2,5	17,0	52,7	30,0	2,00
HP 08-030J		12,700	32,9	38,9	15,2	9,0	1,50	2,5	21,0	65,1	35,0	2,40
HP 08-040J		12,700	39,1	45,1	15,2	9,0	1,50	2,5	25,0	77,5	45,0	2,90
HP 08-050J		12,700	51,6	57,6	15,2	9,0	1,50	2,5	33,0	102,3	55,0	3,80
HP 08-065J		12,700	64,2	70,2	15,2	9,0	1,50	2,5	41,0	127,2	70,0	4,70
HP 08-075J		12,700	76,7	82,7	15,2	9,0	1,50	2,5	49,0	152,0	80,0	5,60
HP 08-100J		12,700	101,7	107,7	15,2	9,0	1,50	2,5	65,0	201,6	105,0	7,50
HP 12-020J		19,050	18,7	25,7	22,5	13,5	2,00	3,5	9,0	55,4	25,0	2,10
HP 12-025J		19,050	27,0	34,0	22,5	13,5	2,00	3,5	13,0	80,1	30,0	3,00
HP 12-035J		19,050	35,4	42,4	22,5	13,5	2,00	3,5	17,0	104,7	40,0	3,90
HP 12-040J		19,050	43,7	50,7	22,5	13,5	2,00	3,5	21,0	129,4	45,0	4,90
HP 12-050J		19,050	52,0	59,0	22,5	13,5	2,00	3,5	25,0	154,0	55,0	5,80
HP 12-065J		19,050	68,6	75,6	22,5	13,5	2,00	3,5	33,0	203,3	70,0	7,60
HP 12-085J		19,050	85,3	92,3	22,5	13,5	2,00	3,5	41,0	252,6	90,0	9,50
HP 12-100J		19,050	101,9	108,9	22,5	13,5	2,00	3,5	49,0	301,9	105,0	11,40
HP 12-125J		19,050	126,9	133,9	22,5	13,5	2,00	3,5	61,0	375,9	130,0	14,10
HP 16-040J		25,400	40,2	48,2	30,0	18,0	3,00	4,0	13,0	152,4	45,0	6,00
HP 16-050J		25,400	52,6	60,6	30,0	18,0	3,00	4,0	17,0	199,4	55,0	7,90
HP 16-065J		25,400	65,0	73,0	30,0	18,0	3,00	4,0	21,0	246,3	70,0	9,70
HP 16-075J		25,400	77,4	85,4	30,0	18,0	3,00	4,0	25,0	293,2	80,0	11,60
HP 16-100J		25,400	102,1	110,1	30,0	18,0	3,00	4,0	33,0	387,0	105,0	15,30
HP 16-125J		25,400	126,9	134,9	30,0	18,0	3,00	4,0	41,0	480,9	130,0	19,00
HP 24-040J		38,100	40,4	52,4	45,0	27,0	3,00	6,0	13,0	236,0	50,0	9,80
HP 24-050J		38,100	52,8	64,8	45,0	27,0	3,00	6,0	17,0	303,4	60,0	11,80
HP 24-065J		38,100	65,2	77,2	45,0	27,0	3,00	6,0	21,0	374,8	75,0	14,60
HP 24-075J		38,100	77,6	89,6	45,0	27,0	3,00	6,0	25,0	446,2	85,0	17,40
HP 24-100J		38,100	102,5	114,5	45,0	27,0	3,00	6,0	33,0	589,0	110,0	22,90
HP 24-125J		38,100	127,3	139,3	45,0	27,0	3,00	6,0	41,0	731,8	135,0	28,50
HP 24-150J		38,100	152,1	164,1	45,0	27,0	3,00	6,0	49,0	874,6	160,0	34,10

* Plates on one pivot pin

Inverted tooth chain sprockets on request.

When ordered by length in metres, the chain will contain the next higher even number of links with a connecting pin. For this type of inverted tooth chain no cranked links are available.